

APPLICATION:

PRODUCT NAME:  
**DrainKing WASTE VALVE**

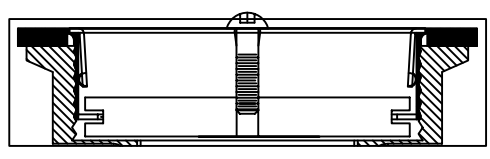
JOB NAME:

SPECIAL CONFIGURATION  
 CHECK BASE MODEL AND OPTIONS

QUANTITY:

ITEM NO.

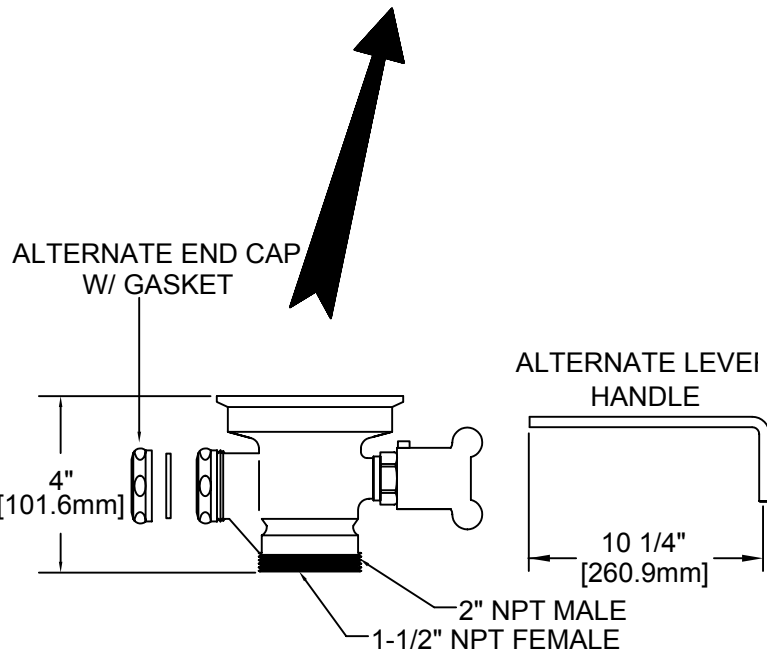
MODEL:  
 22446 w/ VANDAL RESISTANT FLAT STRAINER & KNOB OVERFLOW BODY



OPTIONS OR MODIFICATIONS:  
 SUPPLY LINES (24" OR 36") CIRCLE LENGTH  
 ADD-ON FAUCET (6", 8", 10", 12", 14", 16") CIRCLE  
 IN-LINE DUAL CHECK VALVE  
 HANDLES (CROSS OR WRIST) CIRCLE STYLE  
 VANDAL RESISTANT KIT  
 OTHER \_\_\_\_\_

FEATURES:

- \* DUAL TEFLON SEALS
- \* STAINLESS STEEL BALL
- \* CAST RED BRASS BODY
- \* EXTRA SURDY STAINLESS STEEL CLAMPING RING
- \* "CLEAR THROUGH" OPENING, NO NEED TO DISASSEMBLE IF SNAKING IS REQUIRED
- \* INDUSTRY STANDARD "SEALING" ANGLE - FITS FLUSH TO STANDARD STAINLESS STEEL SINKS
- \* VANDAL RESISTANT STAINLESS STEEL FLAT STRAINER
- \* VANDAL RESISTANT KNOB
- \* END CAP W/ GASKET INSTALLED
- \* 1/4 TURN FULLY OPENS AND CLOSES VALVE
- \* SUPPLIED WITH:
  - ALTERNATE LEVER HANDLE
  - ALTERNATE SLIP JOINT NUT & WASHER



DRAIN RATE:  
\* 12 GPM

SHIPPING WEIGHT  
\* 5.5 LBS

ROUGH-IN:

DRAIN:

